

JUNO
DRAGA & AUREL





JUNO

DRAGA & AUREL

Struttura: struttura circolare realizzata in cemento modellato in modo da creare delle plissettature verticali sulla superficie.

Con il tempo è possibile che si formino delle micro fessure, caratteristiche delle superfici in cemento.

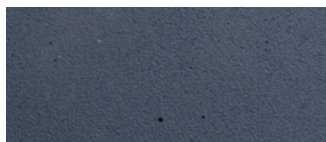
Cassa in legno dotata di due sensori per verifica di eventuali danni durante il trasporto.
(Fare riferimento a "Avvertenze importanti").

Frame: round structure realized with moulded concrete in order to create vertical pleating on the surface.

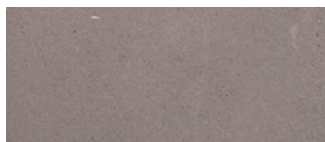
With the passing of time some micro-cracks may create, which are peculiar for cement surfaces.

Wooden crate equipped with two sensors to check for any damage during transport.
(Refer to "Important information").

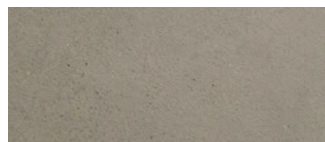
FINITURE DISPONIBILI/AVAILABLE FINISHES



cemento blu
blue concrete



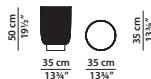
cemento tortora
dove grey concrete



cemento verde muschio
moss green concrete

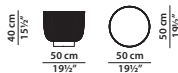
Ø35 h50 cm - Ø13³/₄ h19¹/₂"

Tavolino. Small table.



Ø50 h40 cm - Ø19¹/₂ h15¹/₂"

Tavolino. Small table.



Ø70 h30 cm - Ø27¹/₄ h11³/₄"

Tavolino. Small table.

