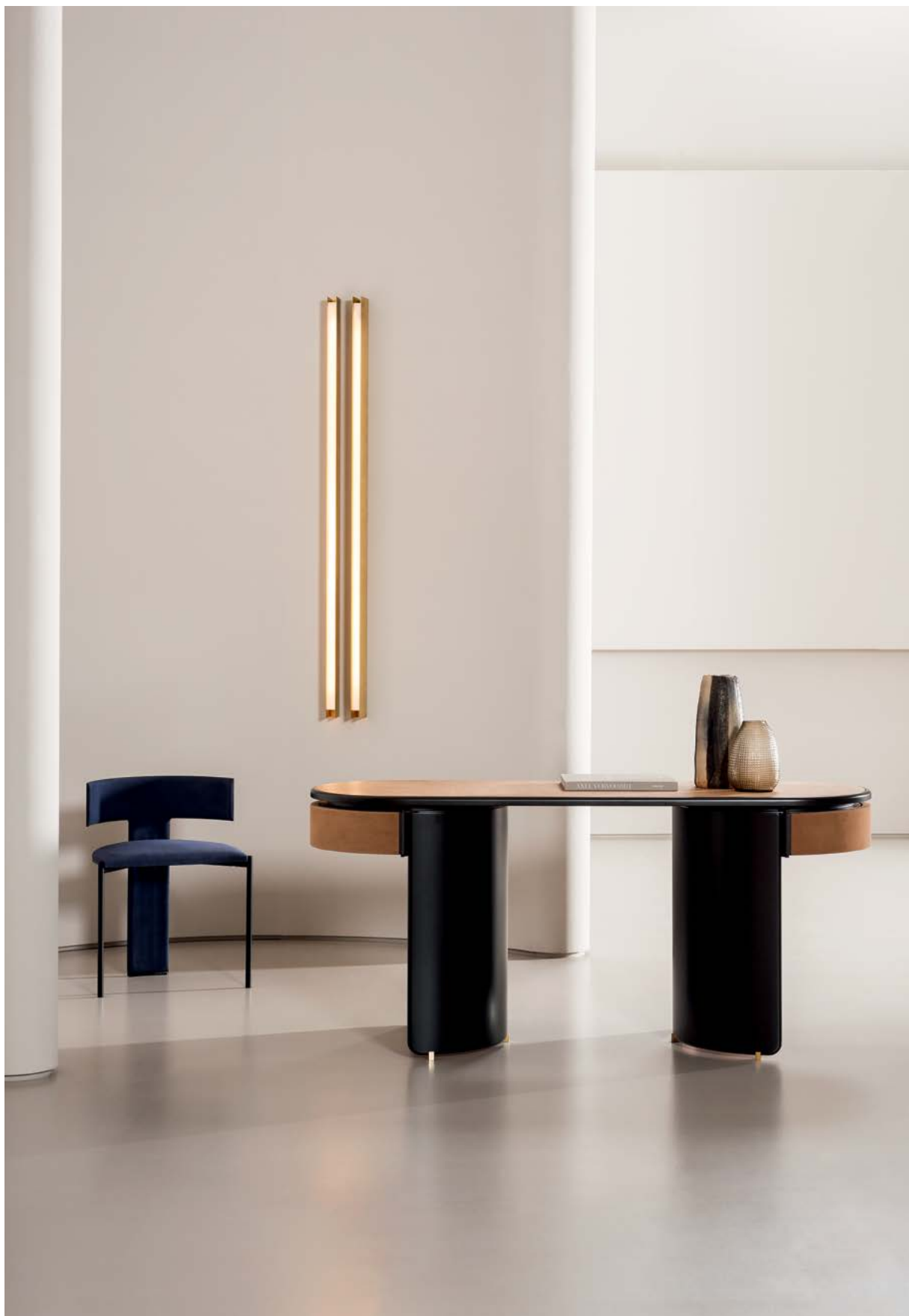
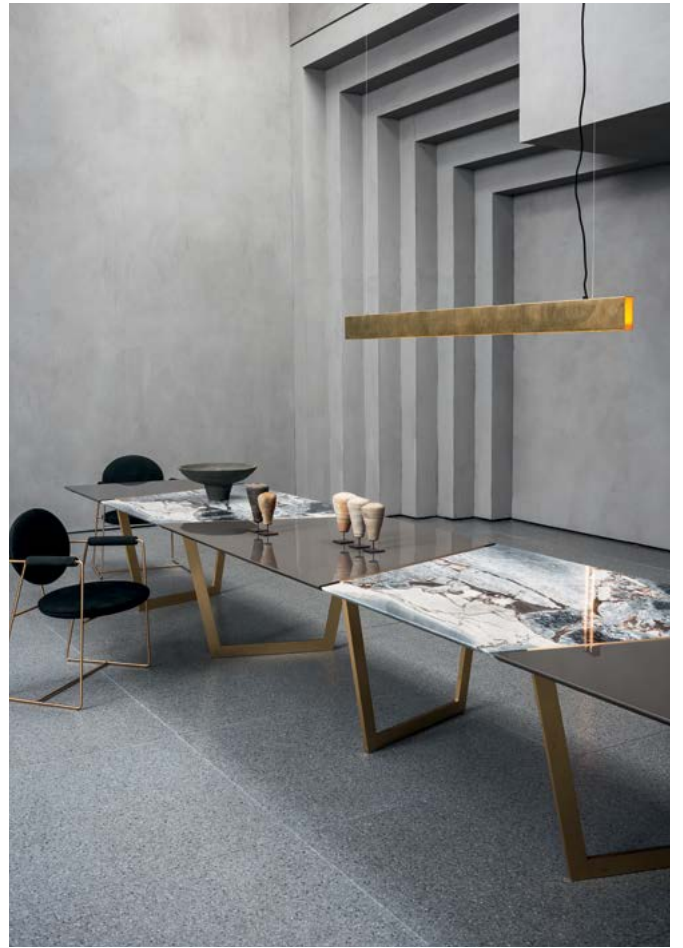


BLADE

BAXTER P.







BLADE

BAXTER P.

Modello: lampada con fonte luminosa a led. Modello che necessita di montaggio.

Struttura: struttura in materiale a scelta con vernice opaca.

Rivestimento: le ossidazioni, uniche nel loro genere, sono di origine organica e realizzate a mano.

Ogni pezzo, riconoscibile per i propri singolari segni cromatici, sarà quindi unico.

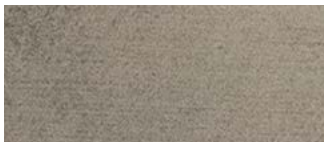
Model: lamp with led light source. Article with assembly required.

Frame: frame in material by choice with matte varnish.

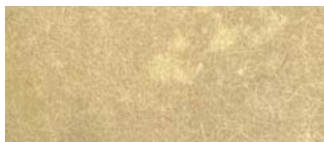
Upholstery: oxidations, with their organic origin, are unique in their being and fully handmade.

Each piece will thus be one of a kind, having particular chromatic features as its own peculiarity.

FINITURE DISPONIBILI/AVAILABLE FINISHES



alpacca

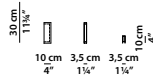


ottone
brass

3,5 x 10 h30 cm - 1¼ x 4 h11¼"

Applique. Wall lamp.

Striscia LED 3000K - 9,6W/MT - 24V.
Classe 1, IP 20. 210 lumen.
3000K LED strip - 9,6W/MT - 24V.
Class 1, IP 20. 210 lumens.

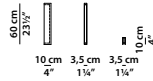


Dimmerazione: **1-10** con supplemento e alimentatore remoto.
DALI con supplemento e alimentatore remoto.
TAGLIO DI FASE con supplemento e alimentatore remoto.
Dimming: **1-10** with surcharge and remote power supply.
DALI with surcharge and remote power supply.
PHASE CUT with surcharge and remote power supply.

3,5 x 10 h60 cm - 1¼ x 4 h23½"

Applique. Wall lamp.

Striscia LED 3000K - 9,6W/MT - 24V.
Classe 1, IP 20. 320 lumen.
3000K LED strip - 9,6W/MT - 24V.
Class 1, IP 20. 320 lumens.

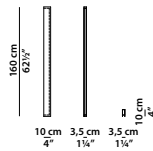


Dimmerazione: **1-10** con supplemento.
DALI con supplemento.
TAGLIO DI FASE con supplemento.
Dimming: **1-10** with surcharge.
DALI with surcharge.
PHASE CUT with surcharge.

3,5 x 10 h160 cm - 1¼ x 4 h62½"

Applique. Wall lamp.

Striscia LED 3000K - 9,6W/MT - 24V.
Classe 1, IP 20. 1600 lumen.
3000K LED strip - 9,6W/MT - 24V.
Class 1, IP 20. 1600 lumens.

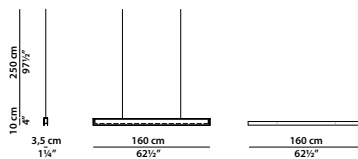


Dimmerazione: **1-10** con supplemento.
DALI con supplemento.
TAGLIO DI FASE con supplemento.
Dimming: **1-10** with surcharge.
DALI with surcharge.
PHASE CUT with surcharge.

160 x 3,5 h10 cm - 62½ x 1¼ h4"

Sospensione. Hanging lamp.

Striscia LED 3000K - 9,6W/MT - 24V.
Classe 1, IP 20. 1900 lumen.
3000K LED strip - 9,6W/MT - 24V.
Class 1, IP 20. 1900 lumens.



Dimmerazione: **1-10** con supplemento.
DALI con supplemento.
TAGLIO DI FASE con supplemento.
Dimming: **1-10** with surcharge.
DALI with surcharge.
PHASE CUT with surcharge.